



UBIQUE SYSTEMS

BOX COMPRESSION STRENGTH TESTER



Marketed by:



**SAURASHTRA
SYSTOPACK PVT. LTD.**

Serviced by:



**SAURASHTRA MARKETING
CORPORATION**



Manufactured by: **UBIQUE, Pune**

Box Compression Strength Tester

Corrugated and solid fibre board boxes are subject to compressive forces when stacked and during transportation.

It is vital to determine the Compression Strength of the Box in order to make sure that the box will be able to resist the anticipated compressive forces and to determine the load that the box will be able to withstand during transit and storage.

This equipment is designed to measure ability of the container to resist external compression loads during transit and storage.

Compression Strength Test also serves as a useful index of overall quality of the material and workmanship of the box.

Available in three models:

- I Digital Model
- II Micro Processor-based Digital Model
- III Fully Automatic Model with Integrated Computerised Touch Screen Control Panel

I Digital Model



Salient Features

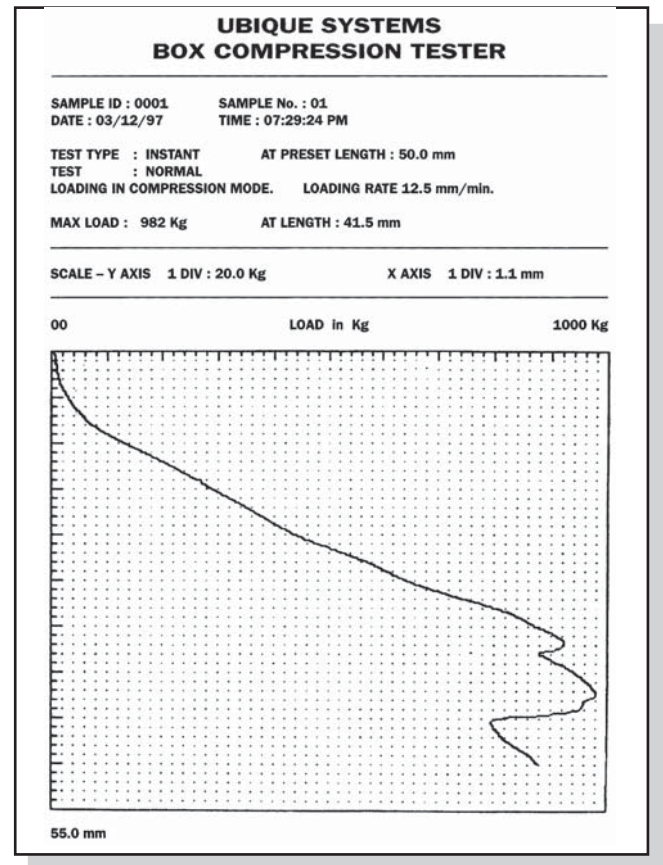
- Direct Digital Readout of Compression Strength and Deflection
- Mechanical drive system as specified in IS 7028-VI
- Sophisticated electronic controls for precision and easy operation
- Electronic Digital Display Panel with least count of 1 kgF and Deflection Panel with a least count of 0.1 mm
- Peak-hold facility provided
- Testing speed: 10 ± 3 mm/minute
- Provision of faster speed for approach and return to top of specimen
- Provision for termination of test at pre-selected load (This facility avoids destruction of the box)

II Micro Processor-based Digital Model



Additional Features of Micro Processor-based Digital Model

- Incorporates Micro Processor-based control panel
- Printer Port Facility
- Results of the tests are stored for viewing or for taking printouts as required (80 col. Dotmatrix printer to be provided by the user)
- Auto tare set facility
- RS232 Port with suitable software to transfer data to PC (PC to be provided by user)



Specimen of PRINT OUT generated by Micro Processor-based Model

III Fully Automatic Model with Integrated Computerised Touch Screen Control Panel

The “Touch Screen Range of Equipments” will enhance your testing practices and experience to a great level. Every feature will impact your operation in a big way.

Features that Enhance Applications

- **Easy to use Control Panel:**
Provide a MMI (Man - Machine Interface) on a touch panel.
- **Graphic User Interface:**
Helps you navigate through procedures and functions.
- **On-line Reporting:**
Comparative reports in reference to previously conducted test can be generated on the machine itself to help immediate comparison and spot analysis.
- **Networking:**
Easy network compatibility to help you remotely access, view and draw data over local network of your workplace.
- **Enhanced Storage:**
Data can be stored for long duration and selective maintenance of data can be done for ease of reference in the future.

Advantages

- Flexibility to access different menu options with ease.
- Self-guided User Interface ensures maximum user-friendliness. All test parameters can be programmed referred, updated, edited and saved for future use.
- The on-line reporting facility allows to carry out comparative analysis of the different tests that have been conducted.
- Networking ability takes testing to the next level.
- Touch Screen range of equipments are able to communicate with each other through a centralized Lab Management Software.
- Enhanced storage facility allows building a vast data library of all tests carried out at various points.

Technical Specifications

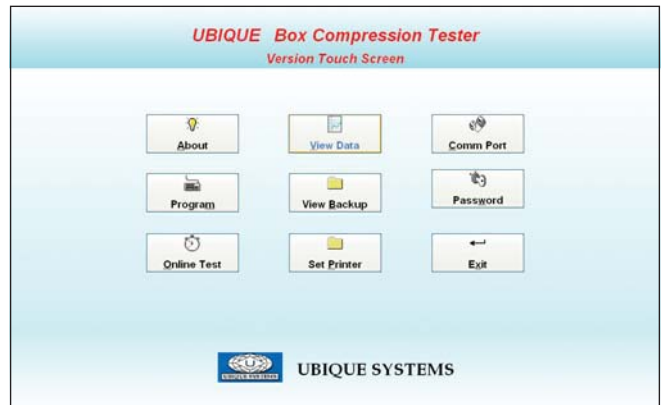
Dimensions in mm (LxWxH) including Control Panel	1600 x 1350 x 2060 (Approx.)
Weight in kgs	820 (Approx.)
Power Requirement	1.25 kW Three Phase 415 Volts Separate Neutral & Earthing
Capacity (Standard Model)	1000 Kgf
Max. Box Size (Standard Model)	1000 mm x 1000 mm x 1000 mm

Our Standard Model has capacity of 1000 Kgf and maximum box size of 1 mtr x 1 mtr x 1 mtr.

Models with higher load capacities and to accommodate larger size boxes available on request.



Product Code: UBC 1M/1T-TS



Suitable for Testing as per following Standards

IS:	7028 (Part VI) 1973 7028 (Part IX) 1975
TAPPI:	T 804 om-02
ASTM:	D 4577 – 94/D 642 – 98
FCBM:	14:96
FEFCO:	TM 50 1997

THE WIDEST RANGE OF TESTING EQUIPMENTS FOR PAPER, PAPERBOARD AND PACKAGING

BURSTING STRENGTH TESTERS



Regular Single Pressure Gauge Model



Deluxe Single Pressure Gauge Model



Deluxe Dual Pressure Gauge Model



Digital Economy Model



Fully Automatic Digital Model



Fully Automatic Micro Processor-based Digital Model



Two-in-One Dual Pressure Gauge Model



Two-in-One Digital Economy Model



Two-in-One Fully Automatic Micro Processor-based Digital Model



Fully Automatic Model with Integrated Computerised Touch Screen Control Panel

BOX COMPRESSION STRENGTH TESTERS



Digital Model



Fully Automatic Model with Integrated Computerised Touch Screen Control Panel

CRUSH TESTERS



Digital Model



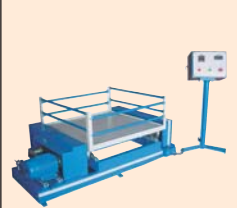
Fully Automatic Model with Integrated Computerised Touch Screen Control Panel

UNIVERSAL TESTING MACHINE



Digital Model

VIBRATION TESTER



TENSILE STRENGTH TESTER



Digital Model

PUNCTURE RESISTANCE TESTER



Mechanical Model

DROP TESTERS



Mechanical Model



Pneumatic Model

TEAR RESISTANCE TESTER



CALIPER THICKNESS GAUGE



Analog Model



Digital Model

SUBSTANCE INDICATOR



Mechanical Model



Digital Model

COBB TESTER



ALSO AVAILABLE

- Paper Tube and Cone Compression Strength Tester
- Moisture Tester
- Specimen Cutter for GSM, Ring Crush & Edge Crush Tests
- Specimen Maker (Flutter) for Concora Medium Test

All digital models are also available with Integrated Computerised Touch Screen Control Panel

Since we are continuously improving and upgrading the equipment, the design and specifications of all models featured here are subject to change without notice.

Marketed by:



**SAURASHTRA
SYSTOPACK PVT. LTD.**

Serviced by:



**SAURASHTRA MARKETING
CORPORATION**



102 & 104, Shilpin Centre, 40, G. D. Ambekar Road, Wadala, Mumbai - 400 031, India. • Phone: 91-22-6736 4343 • Fax: 91-22-6736 4300
E-mail: info@saurashtra.net • Website: www.saurashtra.net

Delhi: Unit No. 216, 2nd Floor, Aditya Complex, R.B.C., Nangal Raya, New Delhi - 110 046.
Phone: 91-11-2852 3658 • 93137 05605 • E-mail: delhi@saurashtra.net