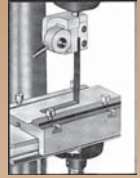




UBIQUE SYSTEMS

UNIVERSAL TESTING MACHINE

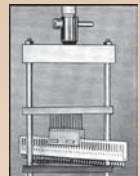
ATTACHMENTS



Attachment for 90°
Peel Test of Adhesives &
Flexural Test on Laminates.



Attachment for Compression
Test of Packaging Materials,
Bottles and Crush Strength of
Medical Tablets.



Attachment for Pull
Strength of Connector &
other Soldered Joints



Spool Grip for Fibres,
Filaments, Wires, etc.



Tensile Grip



Face Grip for Paper,
Plastics, Rubber, etc.



Most useful for
conducting tests for:

- Tension
- Compression
- Flexure
- Shear and other
Mechanical Properties
of a wide range of
materials.



Product Code: UTM / UTM-P / UTM-V / UTM-P(V) / UTM-TS(V)

Marketed by:



**SAURASHTRA
SYSTOPACK PVT. LTD.**

Serviced by:



**SAURASHTRA MARKETING
CORPORATION**



Manufactured by: **UBIQUE, Pune**

UNIVERSAL TESTING MACHINE

This equipment is extremely versatile for conducting a variety of tests, on different materials as per National and International Standards.

Among the many tests that can be conducted on the machine are:

- Actuating Force for Snap Action Switch
- Removal Force for Connector Pins in Plugs
- Tensile Strength of Crimple Terminals
- Tensile Strength of Rubber-fibre and Filaments
- Peel Strength of Adhesives
- Flexural Test for Laminates, PCB's, Plastics, etc.
- Fruit Firmness Test
- Sealing Strength of Pouches and Bags
- Test for Springs, Magnets, etc.

Available in three models

1. With Fixed Testing Speed (Model UTM and UTM-P)
2. With Variable Testing Speed (Model UTM-V and UTM-P(V))
3. Fully Automatic Model with Integrated Computerised Touch Screen Panel (Model UTM-TS(V))

Salient Features

- Digital display of Length and Load.
- Tare set facility for load indicator to set off dead weights of clamps, springs, etc., and to read actual load directly.
- Length reset facility for length indicator at any position of moving platen to indicate actual deflection.
- Fully automatic test with single button test start.
- Easy to programme controller.
- **Test modes available:**
 - Test by preset length • Test by preset load
 - Scrag by length • Scrag by load • Peak mode
 - Electro-mechanical loading system.

The standard model is supplied with flat grip attachment for Tensile Test.

Additional Features of Micro Processor-based Equipment (Model UTM-P and Model UTM-P(V)):

- Printer Port to Print Load and Length/Deflection Graph of Test Data (80 column dot matrix Printer to be provided by user).
- RS232 Port for data transfer to PC/Data Transfer Unit with dedicated Software for Test Analysis (Optional at extra cost).
- Hardware Requirement: PC with CD-ROM drive, Serial Port, minimum 64 MB RAM, Hard Disk with Windows 98 preloaded.

Technical Specifications

Parameter	Specifications for both Models
Loading Speed (to be specified with the order)	Model UTM / UTM-P: Any one specific speed between 12±3 mm/min to 100±3 mm/min
	Model UTM-V / UTM-P(V): 1-100 mm/min or 4 Preset speeds (to be specified) or Higher Loading Speed**
Load Cell Capacity (KgF) To be specified with the order	20, 50, 100, 200, 500, 1000 (Loading Capacity will be approximately 90% of Load Cell Capacity.) This machine can be configured to operate with up to three Load Cells of different capacities (Optional at extra cost)
Load Indicator Resolution	0.1% of Loading Capacity
Load Indicator Accuracy	± 0.4% of Loading Capacity
Load Units (User Selectable)	KgF, Newton, Pound
Admit between Platens	Minimum 100 mm Maximum 500 mm
Power Requirement	3 Phase, 415 VAC, 1.5 HP with independent and effective neutral and earthing
Length Indicator Resolution	0.1 mm
Length Indicator Accuracy	± 0.2 mm
Dimensions of the Standard Machine with Control Panel (W x D x H) mm	1200 x 1100 x 1700 (Approx.)
Machine Weight of the Standard Machine	800 kgs (Approx.)

Standard Machine is supplied with one Load Cell and Attachment for Tensile Strength Test.

Optional at Extra Cost

Depending on requirements and the tests to be carried out, any of the attachment/s shown overleaf can be selected optionally and are supplied at extra cost.

- Additional Load Cells of different capacities.
- Higher admit than 500 mm, between the Platens, in multiples of 100 mm.
- RS 232 Port.
- ** Higher Loading Speed can also be provided up to 500 mm/min.

Fully Automatic Model with Integrated Computerised Touch Screen Control Panel

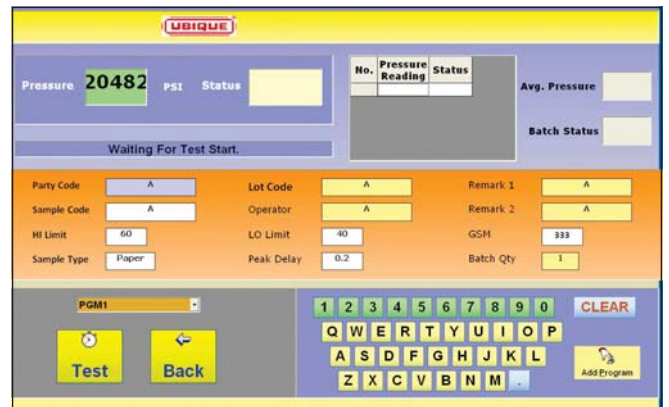
The "Touch Screen Range of Equipments" will enhance your testing practices and experience to a great level. Every feature will impact your operation in a big way.

Features that Enhance Applications

- **Easy to use Control Panel:**
Provide a MMI (Man - Machine Interface) on a touch panel.
- **Graphic User Interface:**
Helps you navigate through procedures and functions.
- **On-line Reporting:**
Comparative reports in reference to previously conducted test can be generated on the machine itself to help immediate comparison and spot analysis.
- **Networking:**
Easy network compatibility to help you remotely access, view and draw data over local network of your workplace.
- **Enhanced Storage:**
Data can be stored for long duration and selective maintenance of data can be done for ease of reference in the future.

Advantages

- Flexibility to access different menu options with ease.
- Self-guided User Interface ensures maximum user-friendliness. All test parameters can be programmed, referred, updated, edited and saved for future use.
- The on-line reporting facility allows to carry out comparative analysis of the different tests that have been conducted.
- Networking ability takes testing to the next level.
- Touch Screen range of equipments are able to communicate with each other through a centralized Lab Management Software.
- Enhanced storage facility allows building a vast data library of all tests carried out at various points.



Free Data

Sr.No	Test Value	Status	Date	Time	Limit Hi	Limit Lo	GSM	PLY	Test Type	Gain	Party
1	328.4 Lb			1:36 PM			100				
2	231.7 Lb	Rej LO		1:36 PM							
3	188.3 Lb			1:37 PM							
4	710.2 Lb	Accept	27 - Aug - 2008	1:39 PM	890.9 Lb	700.0 Lb	100	4	Flat Crush	X 10	IOWERTYU
5	899.4 Lb	Rej HI		1:40 PM							
6	708.9 Lb	Accept		4:49 PM							
7	47.9 Lb	Rej LO		9:15 PM							

Backup	Delete	Print	Bar/Pie Chart	Back	Total	7
					Accepted	2 (28.6 %)
					Rejected	5 (71.4 %)
					Reject HI	1 (20.0 %)
					Reject LO	4 (80.0 %)

THE WIDEST RANGE OF TESTING EQUIPMENTS FOR PAPER, PAPERBOARD AND PACKAGING

BURSTING STRENGTH TESTERS



Regular Single Pressure Gauge Model



Deluxe Single Pressure Gauge Model



Deluxe Dual Pressure Gauge Model



Digital Economy Model



Fully Automatic Digital Model



Fully Automatic Micro Processor-based Digital Model



Two-in-One Dual Pressure Gauge Model



Two-in-One Digital Economy Model



Two-in-One Fully Automatic Micro Processor-based Digital Model



Fully Automatic Model with Integrated Computerised Touch Screen Control Panel

BOX COMPRESSION STRENGTH TESTERS



Digital Model



Fully Automatic Model with Integrated Computerised Touch Screen Control Panel

CRUSH TESTERS



Digital Model



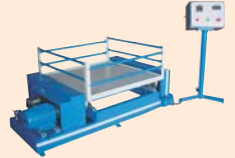
Fully Automatic Model with Integrated Computerised Touch Screen Control Panel

UNIVERSAL TESTING MACHINE



Digital Model

VIBRATION TESTER



TENSILE STRENGTH TESTER



Digital Model

PUNCTURE RESISTANCE TESTER



Mechanical Model

DROP TESTERS



Mechanical Model



Pneumatic Model

TEAR RESISTANCE TESTER



CALIPER THICKNESS GAUGE



Analog Model



Digital Model

SUBSTANCE INDICATOR



Mechanical Model



Digital Model

COBB TESTER



ALSO AVAILABLE

- Paper Tube and Cone Compression Strength Tester
- Moisture Tester
- Specimen Cutter for GSM, Ring Crush & Edge Crush Tests
- Specimen Maker (Flutter) for Concora Medium Test

All digital models are also available with Integrated Computerised Touch Screen Control Panel

Since we are continuously improving and upgrading the equipment, the design and specifications of all models featured here are subject to change without notice.

Marketed by:



**SAURASHTRA
SYSTOPACK PVT. LTD.**

Serviced by:



**SAURASHTRA MARKETING
CORPORATION**



102 & 104, Shilpin Centre, 40, G. D. Ambekar Road, Wadala, Mumbai - 400 031, India. • Phone: 91-22-6736 4343 • Fax: 91-22-6736 4300
E-mail: info@saurashtra.net • Website: www.saurashtra.net

Delhi: Unit No. 216, 2nd Floor, Aditya Complex, R.B.C., Nangal Raya, New Delhi - 110 046.
Phone: 91-11-2852 3658 • 93137 05605 • E-mail: delhi@saurashtra.net